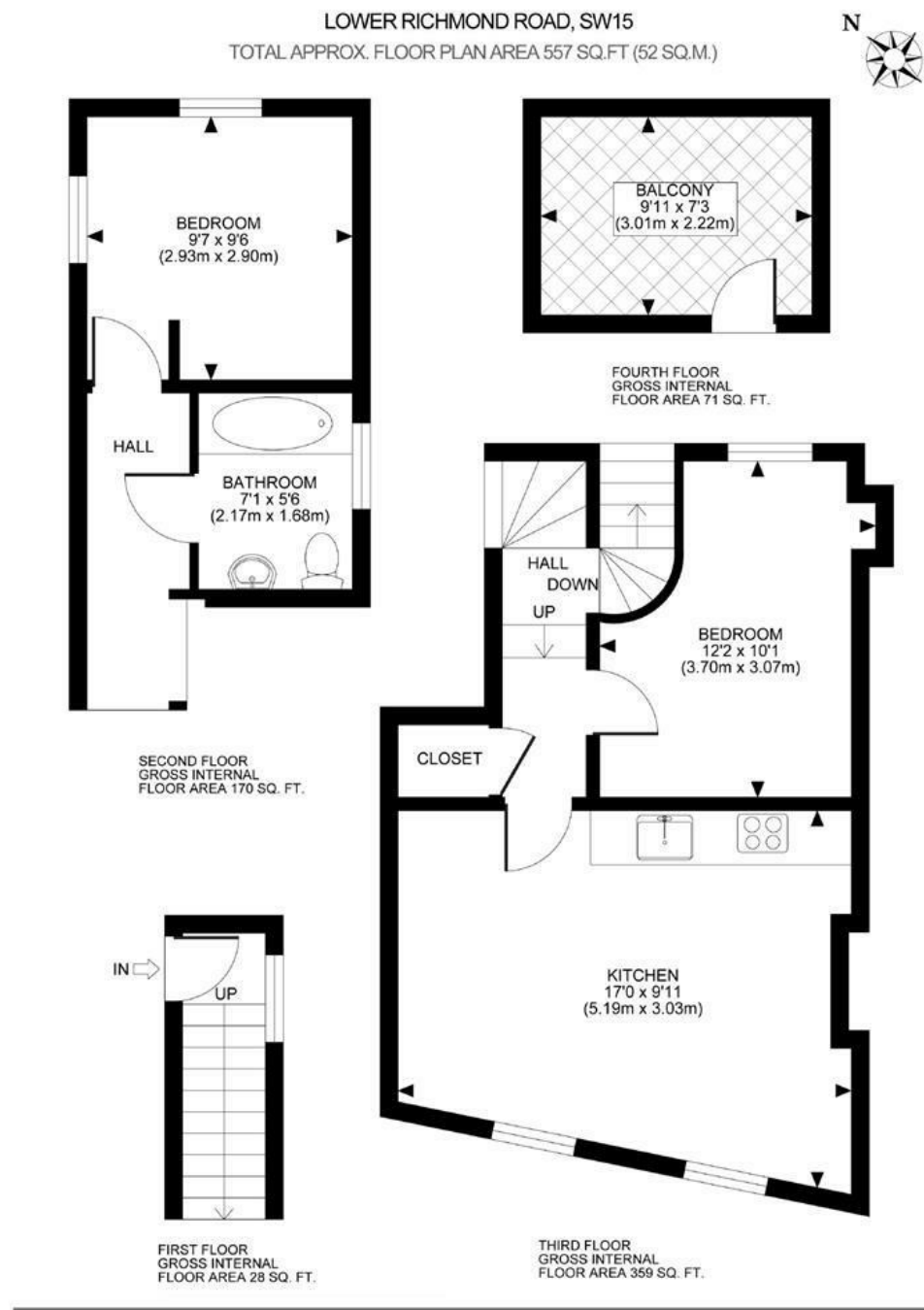


Lower Richmond Road, Putney, SW15

An absolutely stunning and creatively designed two bedroom flat on the top floor of this converted building in the heart of Lower West Putney and moments from the river. Offered on a part furnished basis and benefiting from a spectacular private roof terrace, the accommodation comprises a bright reception room with vaulted ceilings and open plan kitchen, two bedrooms, luxury bathroom and stairs to the private terrace with far reaching views over London. This fantastic flat has been finished to an exceptional standard and is perfectly located for all the amenities and transport of the Lower Richmond Road and Putney High Street. Available now.



All measurements walls, doors, windows, fittings and their appliances, their size and locations are shown conventionally and are approximate only and cannot be regarded as being a representation either by the seller or his agent nor zentuvo
www.zentuvo.co.uk

DISCLAIMER•These particulars are intended to give a fair and substantially correct overall description for the guidance of intending purchasers and do not constitute an offer or part of a contract. Prospective purchasers and/or lessees ought to seek their own professional advice.
•All descriptions, dimensions, areas, references to condition and necessary permissions for use and occupation and other details are given in good faith and are believed to be correct, but any intending purchasers should not rely on them as statements or representations of fact, but must satisfy themselves by inspection or otherwise as to the correctness of each of them.
•All measurements are approximate.



- SPECTACULAR FLAT
- OPEN PLAN KITCHEN
- LUXURY BATHROOM
- STUNNING VIEWS
- EPC C
- RECEPTION ROOM
- TWO BEDROOMS
- PRIVATE TERRACE
- PRIME LOCATION
- COUNCIL TAX BAND D

Per Calendar Month
£2,450 Per Calendar Month



